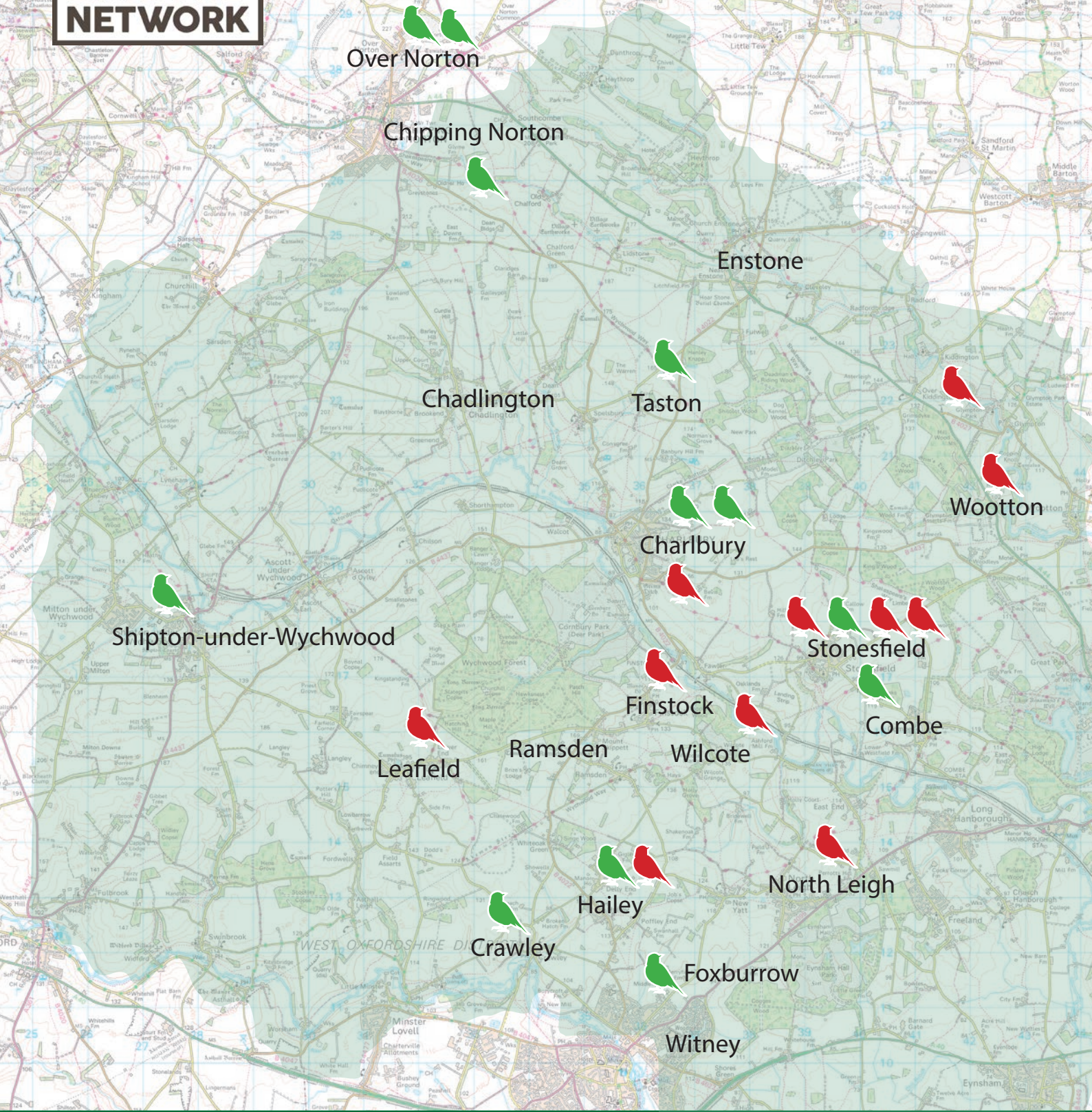




# Farmland Bird Aid Network Feeding Stations Survey: Dec 2020 – Mar 2021

## Feeding farmland birds in West Oxfordshire



 Existing Sites

 New Sites: 2019-21

Feeding farmland birds in West Oxfordshire  
[www.farmlandbirdaidnetwork.org](http://www.farmlandbirdaidnetwork.org)  
Contact: [info@farmlandbirdaidnetwork.org](mailto:info@farmlandbirdaidnetwork.org)

**FARMLAND****BIRD AID NETWORK**

# Farmland Bird Aid Network Feeding Stations Survey: Dec 2020 – Mar 2021

## Feeding farmland birds in West Oxfordshire

Place	Site	Notes
Chipping Norton	Park Farm	Well established farmland bird feeding sites, with bird seed crops and thick hedges where 25kg of seed is scattered per day across the farms during November and April.
Chipping Norton	Walk Farm	Near to Park Farm, this successful farmland bird feeding site has benefited from wildlife friendly farming and daily feeding.
Charlbury	Broadstones	Small farmland established site with a rota of 7 volunteers who feed daily during the hunger gap.
Charlbury	Southill	New biodiverse site with wildflower meadows and thick hedges. Sadly, despite frequent feeding, farmland birds were not attracted.
Charlbury	Quarry Site	Tranquil private site with thick scrub and plenty of cover for the shy yellow hammers.
Crawley	The Paddocks	Small field where the farmland birds have been fed for years. Good hedgerow management and cages helped with providing cover.
Finstock	Dark Lane	New site where feeding began Jan 20. Plans to take less hay, add bird boxes and extend tree cover to increase numbers.
Hailey	Ash Cottage	Yellow hammers and linnets used to frequent this site. Feeding stopped so sadly no farmland birds this year.
Hailey	Breach Wood	New site set in a young wood by arable fields. Feeding began Jan 20. Little brown birds seen in March so hoping for good '21 results.
Leafield	Fairspear	New site where feeding began Jan 20. Up to 15 little brown birds seen - yet to be identified.
North Leigh	The Common	New site set up adjacent to woodland in an arable field. Daily feeding began Jan 20. Beginning earlier in '20 may help?
Stonesfield	Combe Road	Well established site with some feeding in mesh covered area. Rape seed not used hence the drop in linnet numbers compared to last year.
Stonesfield	Farley Close	New site where feeding began Jan 20. Lots of potential.
Stonesfield	Highfield	Successful open site on busy walking track however daily feeding by 7 volunteers has helped boost numbers.
Stonesfield	Kingswood Brake	New site on arable land that borders woodland. Feeding began daily in Dec 19 and the results are so encouraging. Next to local wildlife site.
Stonesfield	Stockey Bottom	New site on set aside land with bird seed crop. The results are so positive and could improve if hedge left uncut.
Taston	Taston	Typically we'd see up to 6 yellow hammers at this site. Was the issue change in feeding practice?
Wilcote	Wilcote Artists	New site in an arable field where feeding began late Jan 20. If we start earlier, might it help bird numbers?
Wootton	Hoardley	New site bordering arable land. Feeding began late Jan 20. No sightings reported.

Feeding farmland birds in West Oxfordshire  
[www.farmlandbirdaidnetwork.org](http://www.farmlandbirdaidnetwork.org)  
 Contact: [info@farmlandbirdaidnetwork.org](mailto:info@farmlandbirdaidnetwork.org)

**FARMLAND****BIRD AID NETWORK**

# Farmland Bird Aid Network Feeding Stations Survey: Dec 2020 – Mar 2021

## Feeding farmland birds in West Oxfordshire

### Maximum numbers counted 2019/20



Place	Site	Yellow hammer	Linnet	Reed Bunting	Skylark	Chaffinch
Chipping Norton	Park Farm	80	150	12	0	175
Chipping Norton	Walk Farm	19	27	3	2	45
Charlbury	Broadstones	17	0	0	0	28
Charlbury	Quarry Site	0	0	0	0	0
Crawley	The Paddocks	23	30	0	0	5
Finstock	Dark Lane	0	0	0	6	2
Hailey	Ash Cottage	0	0	0	0	0
Hailey	Breach Wood	1	0	0	0	2
Leaffield	Fairspear	0	0	0	0	3
North Leigh	The Common	0	0	0	0	50
Stonesfield	Combe Road	2	35	0	0	36
Stonesfield	Farley Close	4	9	0	0	4
Stonesfield	Highfield	15	50	2	2	50
Stonesfield	Kingswood Brake	33	140	0	2	115
Stonesfield	Stockey Bottom	5	1	0	0	25
Taston	Taston	0	0	0	0	10
Wilcote	Wilcote Artists	0	0	0	0	15
Wootton	Jubilee Meadow	0	0	5	0	4

NB Numbers in surveys reduced from last year, due to the impact of covid restrictions on surveyor availability.

Feeding farmland birds in West Oxfordshire  
[www.farmlandbirdaidnetwork.org](http://www.farmlandbirdaidnetwork.org)  
 Contact: [info@farmlandbirdaidnetwork.org](mailto:info@farmlandbirdaidnetwork.org)